



Trabecular Metal™ Dental Implant

Risk Management With BioBoost™ Effect

Healing Power For Your Smile



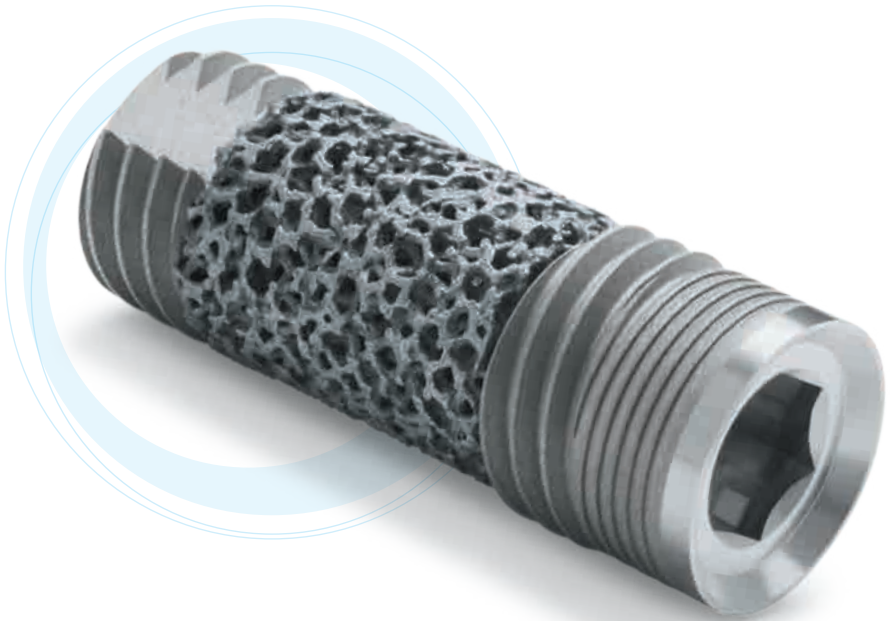
ZIMMER BIOMET
Your progress. Our promise.®

Trabecular Metal Dental Implant

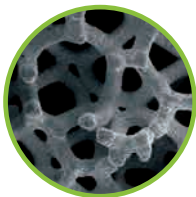
Risk Management With BioBoost™ Effect

Traditional dental implants serve as an artificial tooth and have been used for many decades with high rates of success.

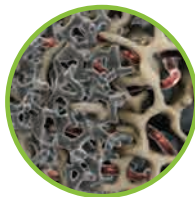
The *Trabecular Metal* Dental Implant leverages the *BioBoost* Effect to enhance healing in patients with poor quality bone or health conditions that could impair healing.¹⁻⁸ Talk to your doctor today to see if the advanced healing technology of the *Trabecular Metal* Dental Implant is an option to help you get your smile back.



Artistic Rendering



Trabecular Metal
Material



Osseoincorporation
Bone Ongrowth
+ Bone Ingrowth*



Your
Trabecular
Bone

How May The Trabecular Metal Dental Implant Benefit Me?

Advanced Healing Techology:

Trabecular Metal Dental Implants with the *BioBoost* Effect may help to enhance your natural healing process compared to traditional dental implants.^{4,5,8} Patients with risk factors such as diabetes, osteoporosis, prior infection or cancer, and poor bone quality have been treated successfully with the *Trabecular Metal* Dental Implant in several documented clinical studies.¹⁻⁷

Peace Of Mind:

Patients with certain medical conditions have a higher risk of dental implant failure. While not a guarantee of success, the *Trabecular Metal* Dental Implant may offer beneficial conditions for tooth replacement in patients with poor bone and impaired healing.



Post treatment cancer patient needing tooth replacement.



Successful treatment with *Trabecular Metal* Dental Implants.*

Images courtesy of Dr. Suheil Boutros, Grand Blanc, Michigan.

Bone
Ongrowth



Traditional
Dental Implant

Bone Ongrowth
+ Bone Ingrowth



Trabecular Metal
Dental Implant

*NOTE: Individual results may vary and case shown is not a guarantee of success.

While this brochure is designed to address some of the frequently asked questions about *Trabecular Metal* Dental Implants, your doctor remains the best source for information regarding dental implants and whether this product is right for you. Your doctor will advise you on specific procedural expectations, warnings, risks, contraindications and potential adverse effects associated with a dental implantation procedure, as well as individual post-operative care instructions and answers to any additional questions or concerns you may have.

1. Soardi, C.M., Zaffe, D., and Wang, H.-L., Rehabilitation of Extremely Atrophic Maxillae with Mineralized Allograft and Highly Porous Dental Implants in European Association for Osseointegration, 2014: Rome, Italy.
2. Brauner, E., Guarino, G., Jamshir, S., Papi, P., Valentini, V., Pompa, V., and Pompa, G., Evaluation of Highly Porous Dental Implants in Postablative Oral and Maxillofacial Cancer Patients: A Prospective Pilot Clinical Case Series Report. *Implant Dent*, 2015. 24(5): p. 631-7.
3. Peron, C., and G. R., Immediate Loading of Tantalum-Based Implants in Patients with Systemic Diseases. *Clinical and Radiographic Long-Term Outcomes*. Academy of Osseointegration, 2017: Orlando, Florida.
4. Kim, S.J., Bencharit, S., Morelli, T., Offenbacher, S., and Barros, S.P., Transcriptomic analysis of wound healing around tantalum and titanium in diabetes, in IADR. 2017: San Francisco, CA.
5. Byrd, K.M., Hefni, E.K., Barros, S.P., Yu, N., Kim, S.J., Bencharit, S., Morelli, T., and Offenbacher, S., Transcriptomic Profiling of Tantalum Metal Implant Osseointegration in Osteopenic Patients. Accepted for publication in *British Dental Journal*, 2018.
6. Peron, C., Javed, F., and Romanos, G.E., Immediate Loading of Tantalum-Based Implants in Fresh Extraction Sockets in Patient With Sjogren Syndrome: A Case Report and Literature Review. *Implant Dent*, 2017. 26(4): p. 634-638.
7. Peron C and G. R., Immediate Loading of Trabecular Tantalum-based Implants placed in Infected Sites with Full Ceramic Restorations. 1-year Clinical Evaluation., in AAID 2016: New Orleans, Louisiana.
8. Bencharit, S., Barros, S., Morelli, T., and Offenbacher, S., Biological Effects of Porous Tantalum Trabecular Metal in the Oral Cavity, in Academy of Osseointegration. 2016: San Diego, CA.



ZIMMER BIOMET

Your progress. Our promise.®

Contact us at 1-800-266-9920 or visit
zimmerbiometdental.com

Zimmer Biomet Dental
Global Headquarters
4555 Riverside Drive
Palm Beach Gardens, FL 33410
Tel: +1-561-776-6700
Fax: +1-561-776-1272

ZB Dental India Pvt. Ltd.
904 & 905, A-Wing,
Damji Shamji Corporate Square,
Off. Ghatkopar-Andheri Link Road,
Laxmi Nagar, Ghatkopar East,
Mumbai – 400075 (INDIA)
Tel.: 1-800-266-9920
Email: customer care.indiadental@zimmerbiomet.com

Unless otherwise indicated, as referenced herein, all trademarks are the property of Zimmer Biomet; and all products are manufactured by one or more of the dental subsidiaries of Zimmer Biomet Holdings, Inc. and marketed and distributed by Zimmer Biomet Dental and its authorized marketing partners. For additional product information, please refer to the individual product labeling or instructions for use. Product clearance and availability may be limited to certain countries/regions. This material does not comprise medical advice or recommendations. This material may not be copied or reprinted without the express written consent of Zimmer Biomet Dental. ZB05951N_EN REV A 12/18 ©2020 Zimmer Biomet. All rights reserved.

