




Aesthetic. Efficient.
Optimized.



TSV™ Scan-thru Dental Dentistry Workflow

BellaTek® Work Order Form 

ADDRESS

Account Number: _____ Customer Address: _____
Billing/Shipping Address: _____ Ship To Address: _____
Sales Representative: _____ Phone: _____

BellaTek® Definitive Abutments for Certain®, Ex-Hex, and TSV® Connections

Use with Standard **Use with TSV®** **Use with Certain®**

Product Code	Material	Color	Size	Quantity
TSV®				
Connection Type	Standard	Standard	Standard	Standard
Material	Standard	Standard	Standard	Standard
Multiple Abutments	Standard	Standard	Standard	Standard
Standard	Standard	Standard	Standard	Standard
Standard	Standard	Standard	Standard	Standard
Standard	Standard	Standard	Standard	Standard
Standard	Standard	Standard	Standard	Standard
Standard	Standard	Standard	Standard	Standard
Standard	Standard	Standard	Standard	Standard

BellaTek Express and Flex Abutments for Certain Connection

Product Code	Material	Color	Size	Quantity
TSV®				
Connection Type	Standard	Standard	Standard	Standard
Material	Standard	Standard	Standard	Standard
Multiple Abutments	Standard	Standard	Standard	Standard
Standard	Standard	Standard	Standard	Standard
Standard	Standard	Standard	Standard	Standard
Standard	Standard	Standard	Standard	Standard
Standard	Standard	Standard	Standard	Standard
Standard	Standard	Standard	Standard	Standard
Standard	Standard	Standard	Standard	Standard
Standard	Standard	Standard	Standard	Standard





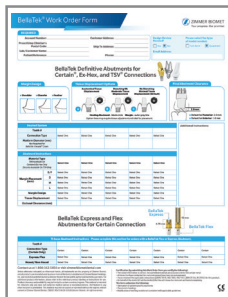
New TSV Scan-thru Digital Dentistry Workflow for 3Shape Users

Introducing the new TSV Scan-thru Digital Dentistry Workflow enabling you to send BellaTek® Encode® scans from your Intra-Oral and 3Shape desktop scanner to our ZimVie Milling Center through the 3Shape software. Attaching your specifications via an electronic work order form along with your scans will enable our experienced designers to design accurate and definitive abutments as well as working models for you.

- 1** Take an Intra Oral scan of the BellaTek Encode Healing Abutment or scan the physical model received from your dentist on a desktop scanner.



- 2** Fill out the electronic BellaTek Work Order Form in Adobe Acrobat and save on your device.



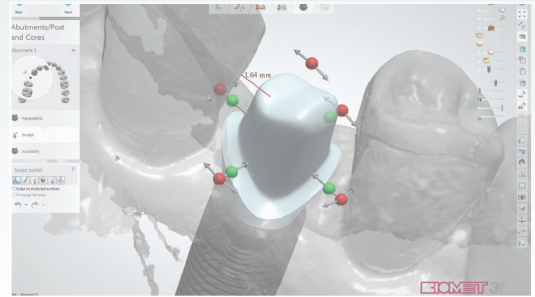
You can download the form from the ZimVie Website at www.zimvie.com/en/customer-service/dental.html



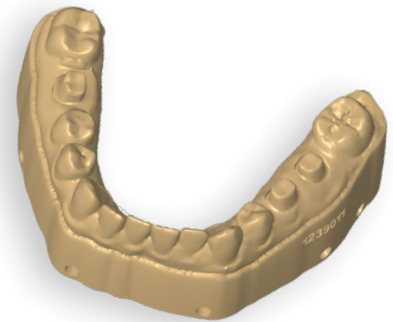
- 3** Upload the BellaTek Encode scan as well as the BellaTek Work Order Form through the 3Shape Dental Manager Software. Contact ZimVie Dental BellaTek Customer Service at 1-888-800-8045 to help setup ZimVie Milling center as your manufacturing partner.



4 Based on the specifications in the work order form, our BellaTek designers decode your case and design a definitive abutment and a quadrant or a full arch working 3D Printed model for you.



5 If requested on the BellaTek Work Order Form, receive a digitally designed Abutment STL file back from us through email in order for you to fabricate your crown while we mill the abutment and working model based on your specifications.



6 ZimVie Dental utilizes the state-of-the-art Carbon Digital Light Synthesis™ (DLS) printing technology to print high-quality, consistent, and accurate 3D printed working models for you, achieving a highly aesthetic CAD/CAM abutment with a precision fit.

7 Receive a definitive patient-specific BellaTek Abutment or alternatively a TSV BellaTek Express/Flex Abutment, and a quadrant or a Full Arch 3D Printed model with a TSV Digital Analog placed inside it, exactly to your specifications.





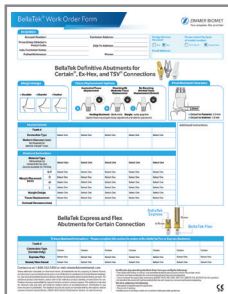
Flexible TSV Dentistry Workflow for Non-Digital or Non-3Shape Users

In case you do not own a scanner or do not have a 3Shape dental manager license, with the new TSV Dentistry Workflow, you can send your TSV Encode Stone Model cases directly to ZimVie Milling Center at Palm Beach Gardens, FL. We will decode, design and fabricate patient-specific BellaTek Abutments, as well as 3D Printed model with a TSV Analog adhering to highest levels of aesthetics and functional outcomes.

- 1** Pour up the stone model of your Encode Impression.



- 2** Fill out the electronic BellaTek Work Order Form in Adobe Acrobat and save on your device.

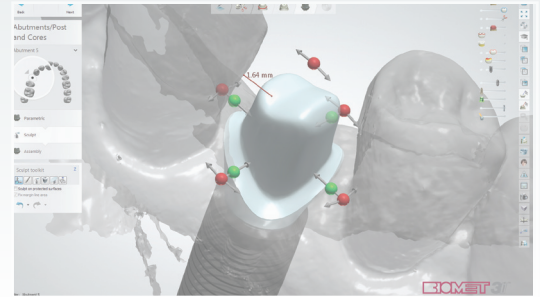


You can download the form from the ZimVie Website www.zimvie.com/en/customer-service/dental.html

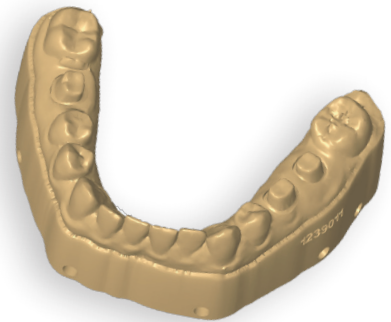
- 3** Ship the Encode Stone model along with the printed BellaTek Work Order Form to the ZimVie BellaTek Department Milling Center at 4555 Riverside Drive, Palm Beach Gardens, FL 33410.



4 Based on the specifications in the Work Order Form, our BellaTek Designers scan your stone model, decode your case and design a precise customized CAD/CAM abutment and a quadrant or a full arch working 3D Printed model for you.



5 If requested on the BellaTek Work Order Form, receive a digitally designed Abutment STL file back from us through email in order for you to fabricate your crown while we mill the abutment and working model based on your specifications.



6 ZimVie Dental utilizes the state-of-the-art Carbon Digital Light Synthesis™ (DLS) printing technology to print high-quality, consistent, and accurate 3D printed working models for you, achieving a highly aesthetic CAD/CAM abutment with a precision fit.

7 Receive a definitive patient-specific BellaTek Abutment or alternatively a TSV BellaTek Express/Flex Abutment, and a quadrant or a Full Arch 3D Printed model with a TSV Digital Analog placed inside it, exactly to your specifications.





For any questions regarding 3Shape Communicate setup,
please contact ZimVie Customer Service by phone at 1-888-800-8045
or by email at DentalCSDigital@ZimVie.com

