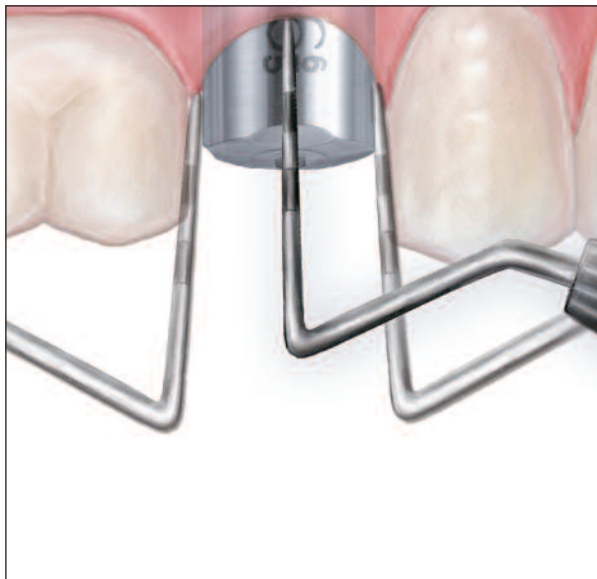


BellaTek® Encode® Impression System

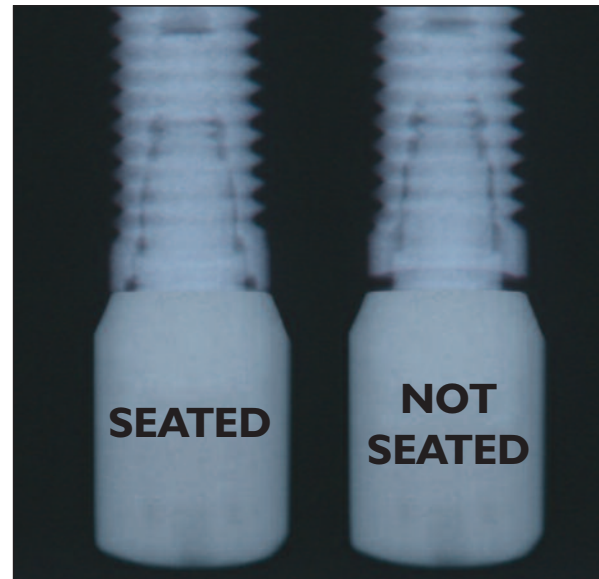
Restorative Recommendations



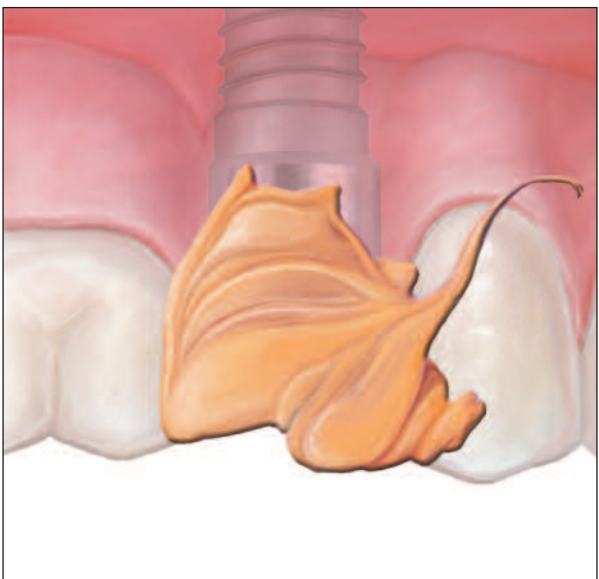
1. Hand tighten BellaTek® Encode® Healing Abutments before impressing. Ensure that the soft-tissue has matured and completely healed.



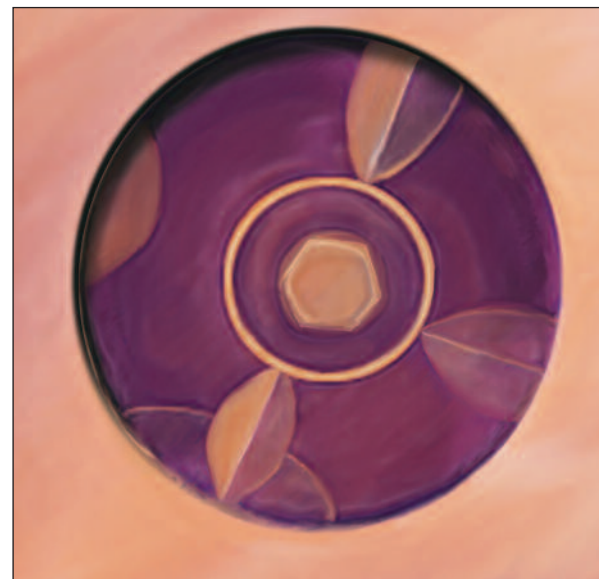
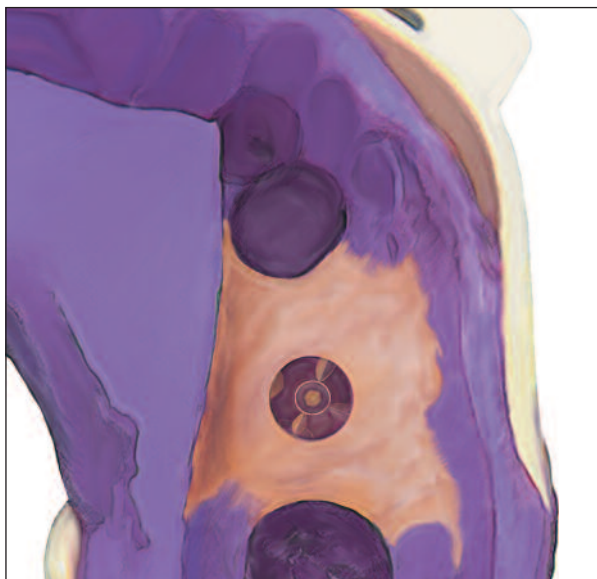
2. The height of the abutment collar, not including the domed occlusal portion, should extend **2mm above the soft-tissue (1mm minimum)** on all sides.



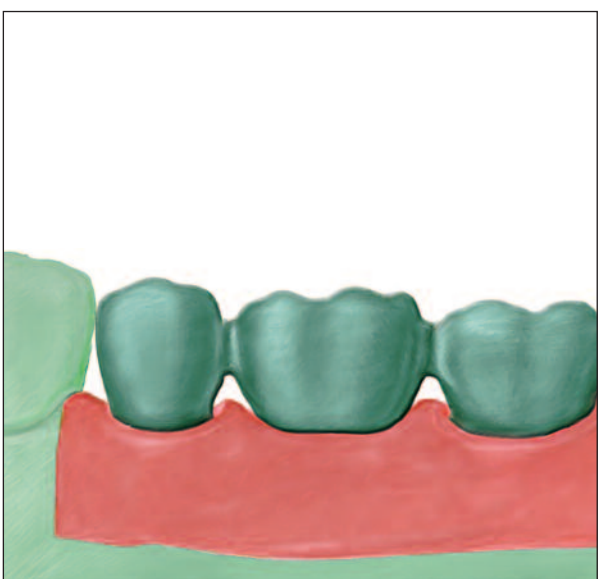
3. Ensure that the BellaTek Encode Healing Abutments are **fully seated** on the implant with a **radiograph**.



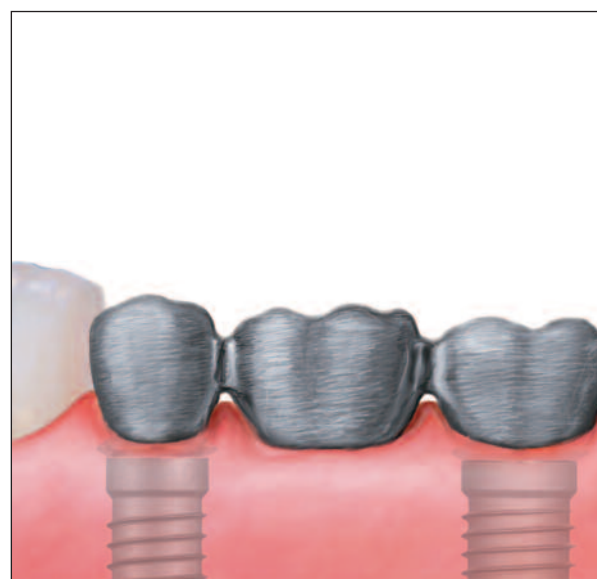
4-5. Use a **light body** impression material around the healing abutment and **medium body** elastomeric impression material (polyether or polyvinyl) in the tray.



6. Verify that a **clear impression** (no rips, tears, bubbles or distortions) has been made of all the BellaTek Encode Healing Abutment markings and the entire circumference of the healing abutment. In addition, ensure that the tissue contours have been captured.



7. Larger cases of three or more units should include a **diagnostic wax up**.



8. A **metal or resin framework try-in** is recommended for multiple-unit cases.

