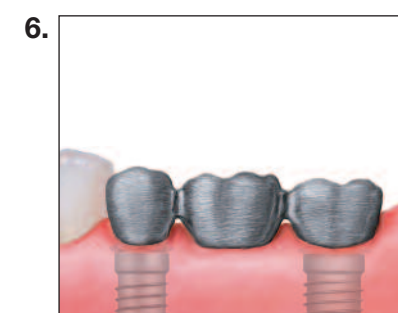
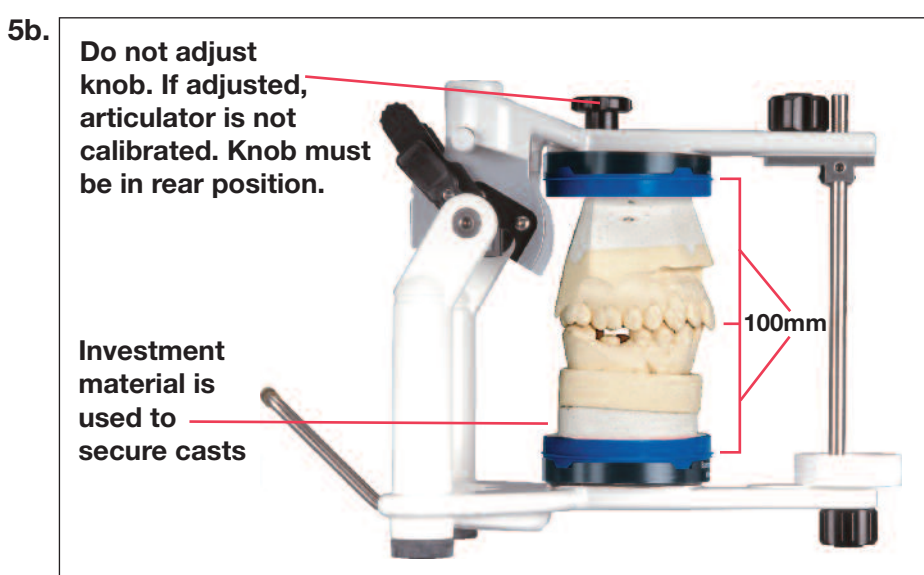
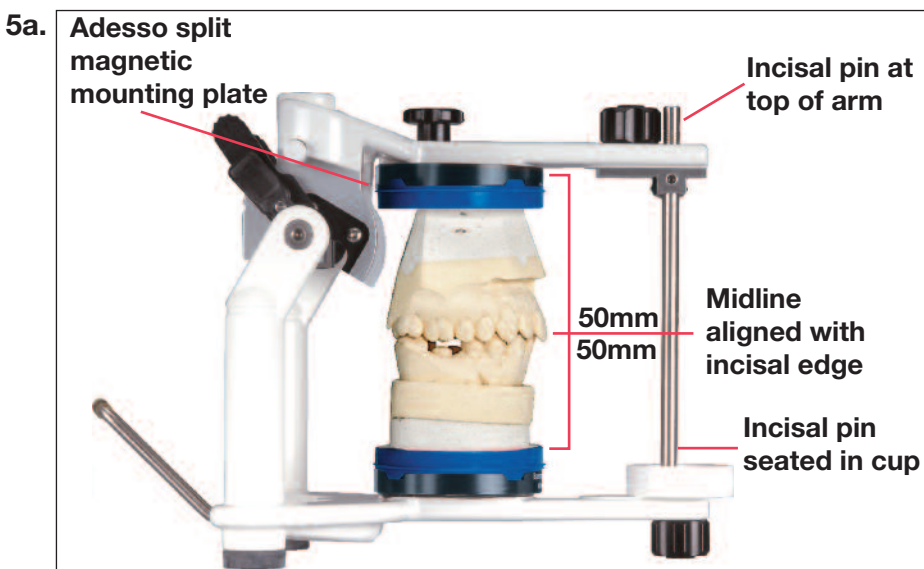
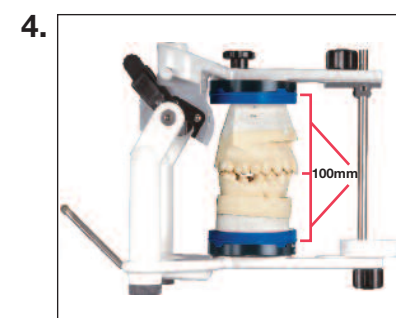
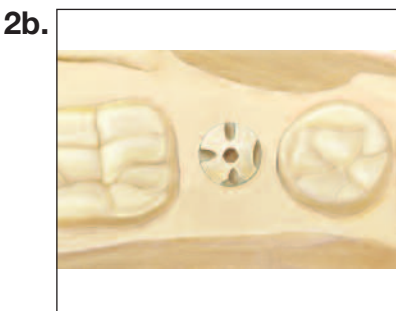
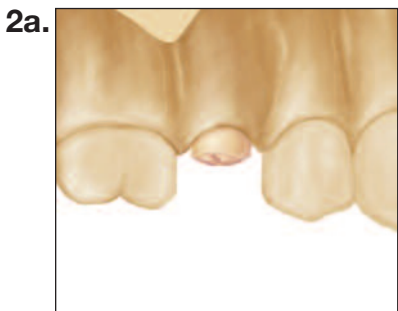
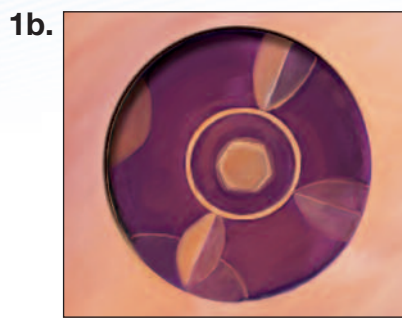
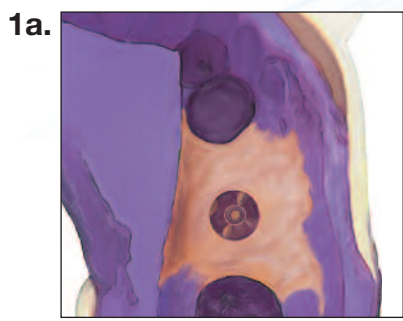


The BellaTek™ Encode® Impression System

Laboratory Recommendations



- 1a. Inspect the case for an **accurate impression** of the BellaTek™ Encode® Healing Abutment. Impressions of BellaTek® Encode Healing Abutments must be clearly visible.
- 1b. The total circumference should be 2mm above the soft tissue (1mm minimum). Codes should be visible with no rips, tears, bubbles or distortion.
- 2a. Use **Low Expansion Die Stone**. For proper scanning, the cast must provide the following:
 - 2b. Visibility of the BellaTek Encode Healing Abutment(s) showing 1mm of the collar. A defect-free occlusal surface and a clear view of the surrounding tissue. There should be no voids or bubbles in the stone. Weigh and measure die stone and water per the manufacturer's instructions. Allow the stone to fully set. Do not flip or mount casts prematurely.
3. Solid casts with at least **two centimeters** of a stone base must be used to accommodate the length of the implant analog to be placed. **Only use solid unpinned casts. Do not section casts. Do not use plates or pins. Plates or pins in models are not acceptable (either metal or plastic)** – this will cause damage to the equipment and may destroy the cast.
4. Mount the casts on an articulator compatible with **Adesso® Split Mounting Plates** using the bite registration. **Use genuine, undamaged Adesso® Split Mounting Plates; do not pour a cast of plates.**
 - Adesso® Split Plate Compatible Articulators with magnetic plates enable reproducibility in articulation and are used so that articulators do not need to be shipped from the laboratory to **BIOMET 3i**. Adesso® Split Plates were selected due to their global availability to customers. Therefore, articulators compatible with Adesso® Split Plates are required.
 - Adesso® Split Plate Compatible Articulators include the Ivoclar Stratos® Series Articulators and Baumann Articulators available through the following sources: Accu-liner, DUS Dental U, Servo Dental, Tech Quest or visit <http://www.baumann-dental.de>.
 - **Use only a properly calibrated articulator.** Please contact the manufacturer for a calibration key.
5. Casts must be **centered** on mounting plates. The scanners read where the plates are located. If the cast is off the plate, the cast will not be scanned correctly.
 - a. Articulate casts using a bite registration and secure in place. Place the casts on a calibrated articulator with Adesso Split Plates upright. Attach the plastic mounting plate to the magnetic plate.
 - b. Place articulated casts in the center of the mounting plates. Secure casts while applying the mounting plates. Do not use a Face Bow Mount during this process to mount. Do not adjust the Magnetic Mounting Plate. Apply base stone material to attach the plastic plate to the articulated cast and wait for it to set. Repeat the process to mount the lower plate. **Height of each mounted cast cannot exceed 50 millimeters (total combined height 100mm).**

Use the BellaTek Encode Online Work Order Form. Work orders must be legible, complete and include the account number, account name, patient ID, doctor's zip code, margin type, position, analog placement (Yes or No) and any additional notes related to the case.

 - Common reasons for delay of cases are incomplete and/or illegible Work Order Forms and/or not using the latest revision of the Work Order Form.
 - **Send the master cast, opposing cast and bite registration with the Work Order Form. Do not send articulators as these are unnecessary, heavy, may be damaged and will increase shipping charges.**
6. A **metal or resin framework try-in** is recommended for multiple-unit cases.



INST1120
REV A 04/14

BIOMET 3i
PROVIDING SOLUTIONS - ONE PATIENT AT A TIME™