

iTero Intraoral Scanners

Visualise A Better Practice



Visualise A Better Practice

Elevate your dental expertise with the **iTero** Intraoral Scanners and optimise your restorative workflows

Transform your practice and your chairside consults. Help your patients visualise their potential treatment results and make them feel more engaged about their treatments.



Digitisation

Benefit from digital workflows for all your treatments: [Digitise Your Practice!](#)

- Optimise your [Restorative Workflows](#) with dental laboratory and chairside system connectivity
- Plan your [Orthodontic Treatments](#) with Invisalign clear aligners
- Create [Facially-Driven Smile Designs](#) and aligners through DSD App integration
- Go beyond what the eye can see with the near-infrared imaging (NIRI) [Caries Detection Aid Technology](#)
- Detect and monitor oral change overtime with [iTero TimeLapse Technology](#)
- Improve your [Guided Surgery Planning](#) with highly accurate 3D models in real colours



Optimisation

Change the way you run your practice. [Get Digitalised!](#)

- Reduce chair time
- Increase productivity
- Improve efficiency, processes and outcomes



Visualisation

Don't just tell your patients they need treatment. [Show Them Why!](#)

- Patient communication and education
- Attractive marketing tool and practice differentiator
- Patient treatment acceptance

We're big on results:

60 seconds

Complete a full-arch scan
in as little as 60 seconds¹

5.5 million +

Restorative cases scanned²

25% faster

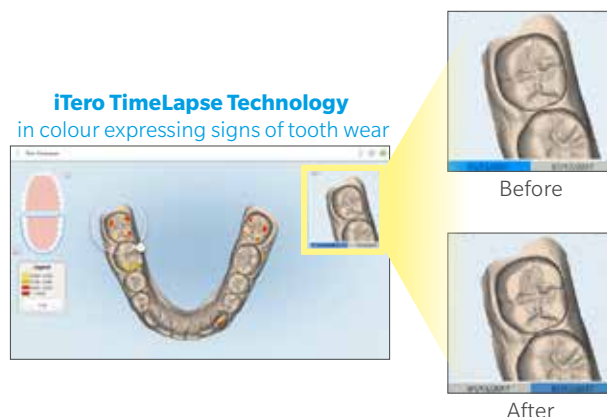
The iTero Element 2
processes scans 25% faster³

1. This is an estimate, scan times vary and depend on individual experience. Data on file at Align Technology. 2. As of July 2020, iTero scans have been used in more than 5.5 million restorative case scans, including crown, bridge, and custom implant cases and more than 24 million iTero orthodontic case scans. Data on file at Align Technology, as of July 22nd, 2020. 3. 25% faster scan processing with the iTero Element 2 as compared to the iTero Element, and based on comparison of 40 Invisalign scans and 40 restorative scans with 3 prep teeth processed by each product: iTero Element and iTero Element 2.

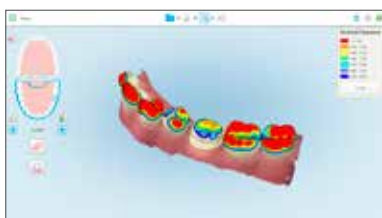
Patient Communication & Treatment Acceptance

Visualise your patient's past...

Changes in oral health can be hard to monitor over time, and even harder to illustrate without clear visuals to support. Scan at every visit to collect comprehensive digital records. Enable proactive discussion of treatment options with [iTero TimeLapse Technology](#).



Analysis instruments such as the **Occlusal Clearance Tool**



...present,

Use the [Dynamic 3D Display](#) and [Real Colour Scans](#) to visualise your patient diagnosis and education on oral health.

and future potential smile.

Invisalign Treatment

Show patients what their teeth could look like after tooth movement with the [Invisalign Outcome Simulator](#). Then use the [Invisalign Progress Assessment](#) tool throughout treatment to inspire confidence and motivate compliance with a tailored plan.



DSD App Integration

The Digital Smile Design App is now exclusively integrated with iTero Intraoral Scanners to help you focus more of your time on what matters most: treatment. Bringing you a truly seamless, end-to-end digital integration that lets you scan, plan, motivate and treat patients in one continuous workflow.

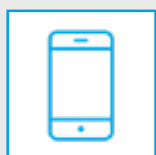
Seamless End-To-End Integration
between iTero Intraoral Scanners and DSD App



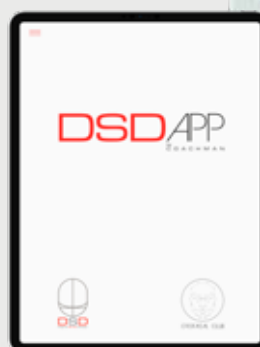
Select DSDApp



Scan patient



See scan on App



iTero Element 2 & iTero Element Flex

Powerful & Portable

Brings innovation to visualisation



iTero Element 2

iTero Element 2 delivers fast scan processing, enhanced¹ ergonomics and high-definition colour imaging, making it the appropriate partner for the modern practice.

iTero Element 2 - experience power & speed

- Quick start up and fast scan processing
- Expanded 21.5" touch widescreen delivers great visualisation
- Integrated battery for uninterrupted scanning²
- Ergonomic, centred cradle provides easy wand access
- Stunning 3D models in real colours for chairside consults

iTero Element Flex³ - goes wherever you go

- Wand-only configuration with accessories such as wand cradle, connection cables, Flex hub with iTero software
- Carrying case fits the laptop, wand and accessories, with lightweight design and a compact footprint
- Wand touchpad is as intuitive and easy as gesturing on your smartphone



iTero Element Flex



¹. Compared to the iTero Element system. ². With a fully charged battery, the user can scan for 30 minutes without having to plug in for power.

³. iTero Element Flex is recommended to be used with certified laptops, that are to be purchased separately. For an updated list of recommended laptop models, please refer to iTero.com or contact your local iTero sales representative.

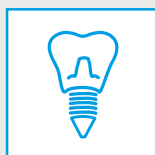
All You Can Do:



Crowns



Bridges



Implant abutments



Veneers



Inlays



Onlays

iTero Element 5D

Go Beyond What The Eye Can See

Just one scan!



iTero Element 5D

iTero Element 5D intraoral scanner is the first hybrid dental imaging system that simultaneously records 3D, intraoral color and NIRI images and enables comparison over time using the iTero TimeLapse Technology.¹ Scan the structures of a tooth (enamel & dentin) in real time and watch as the **iTero Element 5D scanners' s near-infrared imaging²** (NIRI) technology reveals the internal tooth structure without using harmful radiation.

Experience the next generation

- Aids in detecting and monitoring interproximal caries above the gingiva by scanning at every routine appointment, without using harmful radiation
- Distinguish enamel and dentine structure for even better prosthetic design
- Support your diagnostic capabilities for comprehensive preventive and restorative oral care
- Combine the power of diagnostic, restorative, and Invisalign workflows in a single, comprehensive scan



iTero Element 5D
Laptop configuration³



Carrying case fits
the laptop, wand
and accessories

1. Data on file at Align Technology, as of December 4, 2018. 2. iTero Element scanner model(s) may not be available in all markets. 3. iTero Element 5D - Laptop configuration is recommended to be used with certified laptops, that are to be purchased separately. For an updated list of recommended laptop models, please refer to iTero.com or contact your local iTero sales representative.

All It Can Do:



Proximal caries
detection aid



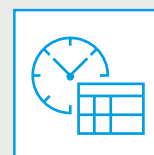
No harmful
radiation



Intraoral
camera



3D digital
impressions



Real-time
TimeLapse



Simulation
capability

iTero Service Plan

Add value to your business

The iTero scanner service offers innovation updates, unlimited secured cloud storage and connectivity, business continuity and significant savings on out-of-warranty costs.



Protect your investment

Warranty coverage for your scanner; save on out-of-warranty repair costs



Peace-of-mind

Secured environment with unlimited, GDPR & HIPAA compliant, cloud service data backup



Keep your business running

Minimise downtime with remote support and fast replacement parts shipments



Optimise your workflow

Receive ongoing training, workflow integration and guidance on best practices



Stay on the cutting edge

Consistently stay updated with our latest software feature-updates

A complete solution for software updates, investment security and business continuity

€330 monthly service plan includes:

Support

- Online remote connection & troubleshooting
- Hardware replacement, with fast spare parts shipments should any issues arise

Software

- Software fixes and operating system upgrades
- Software feature updates

Storage

- Unlimited cloud storage, with access to data anytime & anywhere via myiTero.com
- Data is stored securely

Scan

- Unlimited scans and use of all scanner functionality
- Digital iCast service

+ Service plan customers are eligible for educational services to assist with ongoing training, workflow integration and guidance on best practices

+ Long-term contracts, inclusive of service plan fees, are also available.

Learn more at [iTero.com](https://www.iTero.com)

Certain restrictions apply. Some terms and conditions are set forth below. For additional terms and conditions please review your iTero Element Intraoral Scanner Purchase Agreement/Contract or renewal agreement. Void where prohibited.

Prices are subject to change by Align Technology Switzerland GmbH with 45 day notice. Price does not include any applicable value added taxes, sales taxes or import tax or any similar taxes. These charges will be part of the total price and will be invoiced as a separate line item on the invoice.

The optional annual service plan is limited, lasting for five(5) years from the date of original purchase of the iTero Element intraoral scanner. Service Plan policy and terms are subject to change at Align's discretion from time to time.

For full product specifications please refer to www.iTero.com

iTero Scanners Matrix

Features	iTero Element Flex*	iTero Element 2 with Restorative Foundation Software	iTero Element 2	iTero Element 5D Laptop Configuration*	iTero Element 5D (Wheel Stand Configuration)
Rapid, Colour Scan with Autocalibration	●	●	●	●	●
16:4 Wide 21,5" Touchscreen for Ease of Use		●	●		●
Faster Scan Processing	●	●	●	●	●
Integrated Battery for Uninterrupted Scanning		●	●		●
Restorative Software	●	●	●	●	●
Orthodontic Software & Connectivity (Invisalign)	●		●	●	●
Digital Smile Design Integration for Aesthetics & Orthodontics	●	●	●	●	●
iTero TimeLapse Technology Tool to Visualise Oral Health Changes Over Time	●	●	●	●	●
NIRI Technology Tool for Interproximal Caries Detection Aid				●	●
Intraoral Camera to Record Real Colour Photographs				●	●
Occlusal Clearance Tool for Tooth Preparation Analysis	●	●	●	●	●
Technical & Clinical Support	●	●	●	●	●
Unlimited Cloud Based Scan Storage	●	●	●	●	●
Provides open STL files for Third Party Software	●	●	●	●	●
Chairside CAD and Milling Connectivity	●	●	●	●	●
Restorative Lab Connectivity	●	●	●	●	●
Orthodontic Lab Connectivity	●		●	●	●

*The user must purchase a laptop separately. For an updated list of recommended laptop models, please refer to iTero.com or contact your local iTero sales representative.



Contact us at 1-800-342-5454 or visit

zimmerbiometdental.com

Zimmer Biomet Dental
Global Headquarters
4555 Riverside Drive
Palm Beach Gardens, FL 33410
Phone: +1-561-776-6700
Fax: +1-561-776-1272

Unless otherwise indicated, as referenced herein, all trademarks are the property of Zimmer Biomet; and all products are manufactured by one or more of the dental subsidiaries of Zimmer Biomet Holdings, Inc. and marketed and distributed by Zimmer Biomet Dental and its authorised marketing partners. DSD App is a trademark of Digital Smile Design. Invisalign, iTero, iTero Element, the iTero logo, among others, are trademarks and/or service marks of Align Technology, Inc. or one of its subsidiaries or affiliated companies and may be registered in the U.S. and/or other countries. For additional product information, please refer to the individual product labeling or instructions for use. Product clearance and availability may be limited to certain countries/regions. This material is intended for clinicians only and does not comprise medical advice or recommendations. This material may not be copied or reprinted without the express written consent of Zimmer Biomet Dental. ZB0930 REV C 12/20 ©2020 Zimmer Biomet. All rights reserved.

