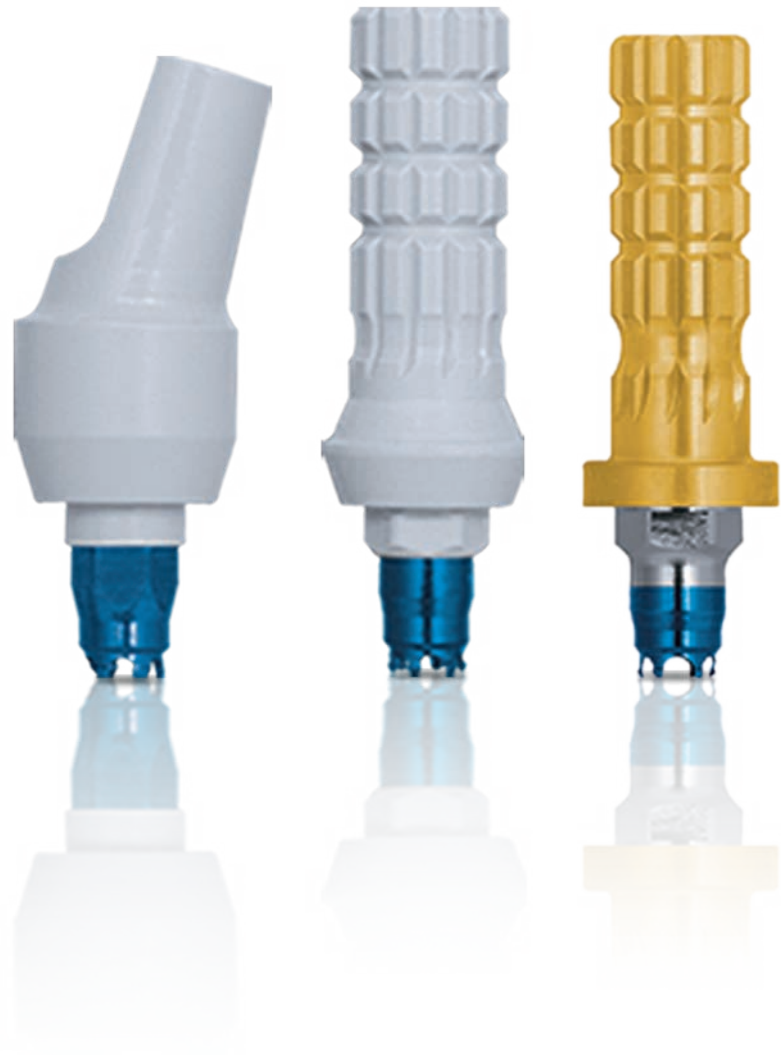


# Provisional Components

Certain® And External Hex Implants



# Provisional Components' Advantages

## Versatile Solutions For Patients Who Demand More Choices And Faster Results

### Ease Of Use And Versatility

- Components can be immediately customized to a patient's anatomical profile
- Components are made of polymer material for easy preparation



### Prosthetic Flexibility

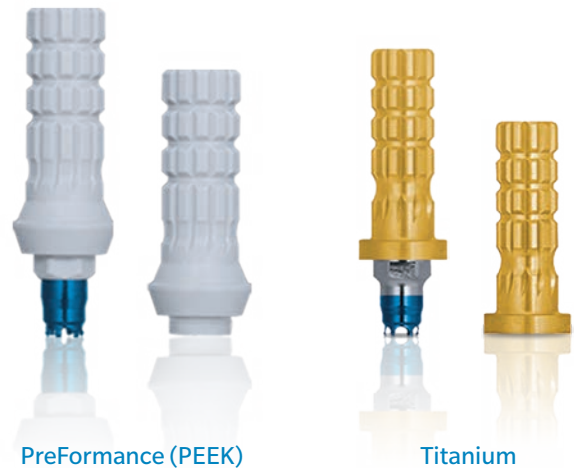
- Available for implant and abutment-level provisional restorations
- Available in internal and external hex connections

### PreFormance® Post

- For use with cement-retained restorations
- Available in straight or 15° pre-angled for easy angle correction
- Smooth surface for easy provisional reline
- Flat side for anti-rotation

### Temporary Cylinders

- Indicated for screw-retained restorations
- Knurled surface for mechanical retention of resin restorative material
- Available in hexed and non-hexed for single or multiple-unit restorations



### QuickBridge® Titanium Cylinder And Peek Cap

- Provide a simple solution for the fabrication of multiple-unit, provisional restorations on definitive Low Profile Abutments
- All components are compatible with straight and angled Low Profile Abutments
- Ability to provisionalize chairside

# Provisional Components' Case Studies

## PreFormance Provisional Case Study By: Dr. Harold Baumgarten†, Philadelphia, PA

If you seek aesthetic implant level provisional restorations, PreFormance Provisional Components may be customized chairside or at the laboratory for specific contours and anatomic profiles.



**Fig. 1.** NanoTite® Certain Implant in place. The bone was profiled around the interface.



**Fig. 2.** A PreFormance Post was seated into the implant.



**Fig. 3.** The PreFormance Post was prepared intraorally to follow the gingival contours.



**Fig. 4.** The prefabricated crown shell was luted to the PreFormance Post.



**Fig. 5.** The provisional restoration was fabricated, occlusal and interproximal contacts were checked, adjusted accordingly and delivered to the patient.



**Fig. 6.** A periapical radiograph was taken of the provisional restoration.

## QuickBridge Provisional Case Study By: Dr. Pär-Olov Östman†, Falun, Sweden

Clinicians who prefer screw-retained definitive restorations but want the simplicity and cost effectiveness of cement-retained immediate or delayed provisional bridges, may find QuickBridge Provisional Components an ideal choice.



**Fig. 1.** Conical-shaped screw-retained abutments were placed with 20 Ncm.



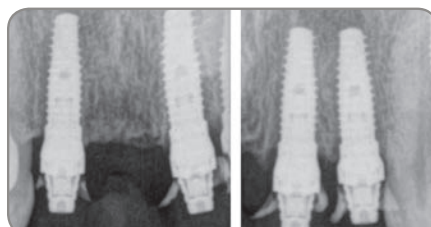
**Fig. 2.** QuickBridge Titanium Cylinders were placed.



**Fig. 3.** QuickBridge PEEK Caps were snapped onto the Titanium Cylinders.



**Fig. 4.** A provisional restoration was fabricated chairside with a translucent template and Protemp™ 4 Garant™ (3M ESPE).



**Fig. 5.** Postoperative radiographs. Three 15 mmL NanoTite Tapered Implants were placed in the extraction sockets.



**Fig. 6.** A BellaTek® copymilled definitive prosthesis was fabricated and placed.

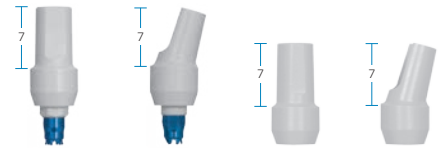
† These clinicians have a financial relationship with Zimmer Biomet Dental resulting from speaking engagements, consulting engagements and other retained services.

# Ordering Information



## Temporary Cylinders

	Titanium		PreFormance	
	Certain Internal Connection	External Hex Connection	Certain Internal Connection	External Hex Connection
<b>3.4 mm</b> Seating Surface				
Hexed	IMMTC51	MMTC51	IMPFTC34	MPFTC34
Non-Hexed	—	—	IMPFTC32	MPFTC32
<b>4.1 mm</b> Seating Surface				
Hexed	IITCS41	ITCS41	IPFTC41	PFTC41
Non-Hexed	IITCS42	ITCS42	IPFTC42	PFTC42
<b>5.0 mm</b> Seating Surface				
Hexed	IWTCS51	WTCS51	IWPFTC51	WPFTC51
Non-Hexed	IWTCS52	WTCS52	IWPFTC52	WPFTC52
<b>6.0 mm</b> Seating Surface				
Hexed	IWTCS61	WTCS61	IWPFTC61	WPFTC61
Non-Hexed	IWTCS62	WTCS62	IWPFTC62	WPFTC62



## PreFormance Posts

	Straight	Pre-Angled (15°)	Straight	Pre-Angled (15°)
	Certain Internal Connection		External Hex Connection	
<b>3.4 mmD</b> Seating Surface				
3.8 mmP x 4.0 mmH	IMPFP34	IMPAPF34	MPFP34	MPAPF34
3.8 mmP x 6.0 mmH	IMPFP36	IMPAPF36	MPFP36	MPAPF36
5.0 mmP x 4.0 mmH	IMPFP354	IMPAPF354	—	—
5.0 mmP x 6.0 mmH	IMPFP356	IMPAPF356	—	—
<b>4.1 mmD</b> Seating Surface				
5.0 mmP x 4.0 mmH	IPFP454	IPAPF454	PFP454	PAPF454
5.0 mmP x 6.0 mmH	IPFP456	IPAPF456	PFP456	PAPF456
<b>5.0 mmD</b> Seating Surface				
5.0 mmP x 4.0 mmH	IWPFP554	IPAPF554	WPFP554	PAPF554
5.0 mmP x 6.0 mmH	IWPFP556	IPAPF556	WPFP556	PAPF556
<b>6.0 mmD</b> Seating Surface				
6.0 mmP x 4.0 mmH	IWPFP664	IPAPF664	WPFP664	PAPF664
6.0 mmP x 6.0 mmH	IWPFP666	IPAPF666	WPFP666	PAPF666

## QuickBridge Provisional Components



Description	Item No.
Cylinder And Cap	LPCQB
Cap	LPCQBCAP



Contact us at 1-800-342-5454 or visit [zimmerbiometdental.com](http://zimmerbiometdental.com)

Zimmer Biomet Dental  
 Global Headquarters  
 4555 Riverside Drive  
 Palm Beach Gardens, FL 33410  
 Tel: +1-561-776-6700  
 Fax: +1-561-776-1272

Unless otherwise indicated, as referenced herein, all trademarks are the property of Zimmer Biomet; and all products are manufactured by one or more of the dental subsidiaries of Zimmer Biomet Holdings, Inc., and distributed and marketed by Zimmer Biomet Dental (and, in the case of distribution and marketing, its authorized marketing partners). Protemp™ and Garant™ are trademarks of 3M Deutschland GmbH. For additional product information, please refer to the individual product labeling or instructions for use. Product clearance and availability may be limited to certain countries/regions. This material is intended for clinicians only and does not comprise medical advice or recommendations. This material may not be copied or reprinted without the express written consent of Zimmer Biomet Dental. ZB0206 REV A 12/17 ©2017 Zimmer Biomet. All rights reserved.

